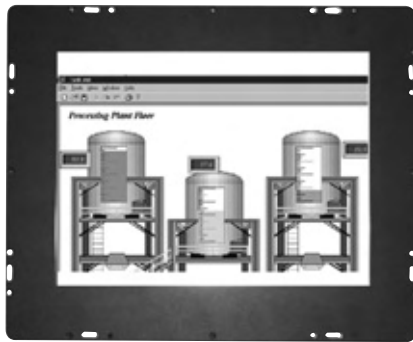


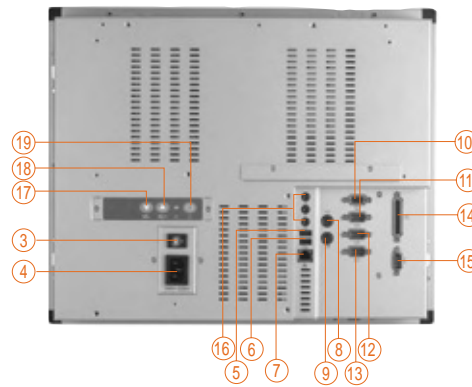
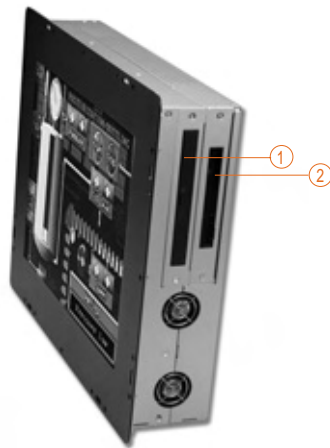
PANEL5150-675

Open Frame 15" TFT Cost-effective Industrial Panel Computer

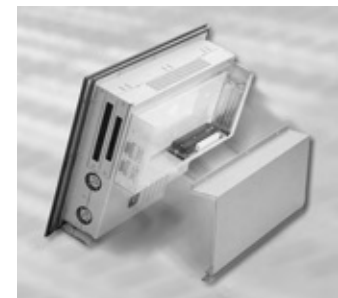


Features

- ▶ Flexible front panel open frame design
- ▶ 15" TFT 250nit high brightness XGA LCD
- ▶ Excellent radiation and light-duty : Alumium chassis
- ▶ Supports AC and DC power supply
- ▶ Supports TTL / DTL digital input / output
- ▶ Supports embedded O.S. : Windows® CE.NET and Windows® XP Embedded
- ▶ Modularized expansion box design for two full-size PCI/ISA cards



- | | | |
|--------------------------|-------------------|--|
| 1. 24x CD-ROM (Optional) | 8. PS/2 keyboard | 15. DIO (4-channel digital inputs / outputs) |
| 2. Slim FDD | 9. PS/2 mouse | 16. Audio output |
| 3. Power switch | 10. VGA port | 17. SEL- |
| 4. AC inlet | 11. COM1 | 18. SEL+ |
| 5. USB | 12. COM2 | 19. Backlight on/off |
| 6. USB | 13. COM4 | |
| 7. LAN (RJ-45) | 14. Parallel port | |



Specifications

Front Bezel	IP65, NEMA 4/12 rugged protection	
LCD Panel	15" XGA TFT	
	Brightness	250 nit
	Resolution	1024 x 768 pixels
	Viewing Angle	Vertical: 100°; Horizontal: 120°
Main System	Main board	
	CPU	ZIF Socket 370 for Intel® Celeron®/Pentium® III processor VIA C3 533~1.4GHz processor
	System Memory	One SDRAM DIMM, Max. 512MB
	Chipset	VIA VT8606 (Twist-T) + VT82C686B
	BIOS	Phoenix-award 4Mbit with RPL / PXE LAN boot ROM, Smart View and customer CMOS backup
	SSD	DiskOnChip® and CompactFlash™
	Watchdog Timer	0.5~ 1600 sec with 64 levels; system reset or NMI
	Onboard Graphics	VIA Twister chip with integrated S3 Pro Savage4 2D / 3D / Video accelerator

Serial Ports	RS-232 x 2
	RS-232 / 422 / 485 x 1 +5V/+12V power output capability by pin 1 and pin 8, selectable via jumper setting
Parallel	SPP / EPP / ECP supported Configurable to LPT1, LPT2, LPT3 or disable
PS/2 Interfaces	PS/2 mouse x 1 PS/2 keyboard x 1
DIO	4 channel bits of TTL/DTL compatible Digital input/output
Hard Disk Drive	1 x 3.5" or 2 x 2.5" type
Ethernet	RTL8100C, 10/100Base-T with WOL
USB	2 x USB ports, USB 1.0 compliant
Audio	AC'97 Audio Codec with Amplify
Peripheral Built-in	Slim type floppy disk drive

Specifications

I/O Connectors	D-Sub 9 pin x 1 (male) for RS-232/RS-422/RS-485 D-Sub 9 pin x 2 (male) for RS-232 D-Sub 25 pin x 1 (female) for parallel D-Sub 15 pin x 1 (male) for DIO P/S 2 x 2 for keyboard and mouse RJ-45 x 1 for Ethernet D-sub 15 pin x 1 (female) for S-VGA output Line-out / Line-in / Mic-in USB connector x 2
Expansion Slot	ISA x 2 + PCI x 1 or PCI x 2 + ISA x 1
System Fan	4 cm fan x 2
TouchScreen	Resistive type (optional)
Power Supply	AC 100-230V, 100W (DC18~56V, 100W for option)
Dimensions	w/o expansion box : 433mm(17.05")(W) x 91.3mm(3.59")(D) x 358mm(14.09")(H) w/ expansion box : 433mm(17.05")(W) x 145.5(5.73")(D) x 358mm(14.09")(H)
Weight	w/o expansion box : 7.7 kg(16.98 lb) w/ expansion box : 8.8 kg(19.40 lb)
Environmental	Operation temperature range : 0°-45°C (32° -113°F) Relative humidity : 20% - 90%, non-condensing

Note: The CD-ROM is optional in Panel 1150-675 module.



Ordering Information

PANEL5150-675-R	Open frame 15" TFT panel PC w/ resistive T/S
PANEL5150-675-RC	Open frame 15" TFT panel PC w/ resistive T/S & slim CD-ROM
PANEL5150-675-G	Open frame 15" TFT panel PC w/ tempered glass
PANEL5150-675-G	Open frame 15" TFT panel PC w/ tempered glass & slim CD-ROM

Optional Accessories

E201150325/330	PANEL1150 expansion kit (2PCI+2ISA)
E202003331	VM-101 (VESA ARM clamp type)
E202003332	VM-105 (VESA ARM wall-mount)
E201150328	CD-ROM kit
E201150332	PANEL1150 VESA + expansion kit

Power Supply Options

DC	18-56V	100W
ATX AC/DC	90-260V	120W

Optional EOS Installation

Windows® XP Embedded
Windows® CE.NET
Linux Kernel 2.4

Optional OS Installation

Windows® 95/98
Windows® NT/2000/XP

Dimensions

