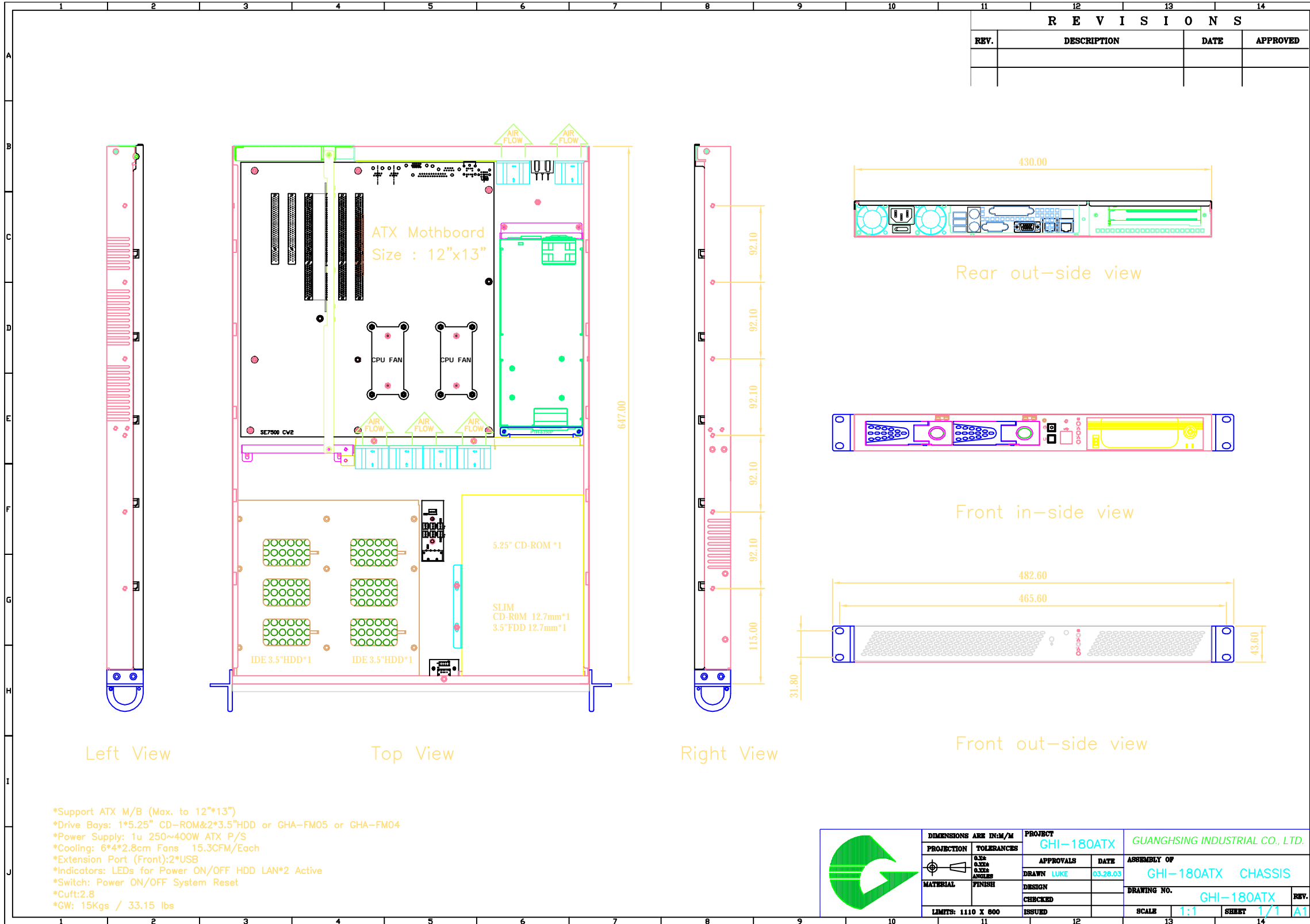
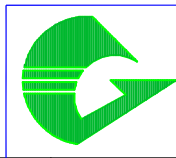


R E V I S I O N S			
REV.	DESCRIPTION	DATE	APPROVED



\*Support ATX M/B (Max. to 12"x13")  
 \*Drive Bays: 1\*5.25" CD-ROM&2\*3.5"HDD or GHA-FM05 or GHA-FM04  
 \*Power Supply: 1u 250~400W ATX P/S  
 \*Cooling: 6\*4\*2.8cm Fans 15.3CFM/Each  
 \*Extension Port (Front):2\*USB  
 \*Indicators: LEDs for Power ON/OFF HDD LAN\*2 Active  
 \*Switch: Power ON/OFF System Reset  
 \*Cuft:2.8  
 \*GW: 15Kgs / 33.15 lbs



DIMENSIONS ARE IN:MM		PROJECT		GUANGHSING INDUSTRIAL CO., LTD.	
PROJECTION	TOLERANCES	GHI-180ATX		ASSEMBLY OF	
3/4	0.1	APPROVALS	DATE	GHI-180ATX CHASSIS	
MATERIAL	FINISH	DRAWN LUKE	03.28.03	DRAWING NO. GHI-180ATX	
LIMITS: 1110 X 800		DESIGN		SCALE	1:1
		CHECKED		SECRET	1/1
		ISSUED		REV.	A1