

### EX9024



Resolution: 12bit

**Analog O/P Channel: 4**

Voltage O/P: +/-10V, 0~10V, +/-5V, 0~5V

Current O/P: 0~20mA, 4~20mA

Safe Value (When host fail / Comm fail)

Power-on Value

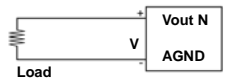
Dual Watchdog Timer

Power I/P: +10V to +30V

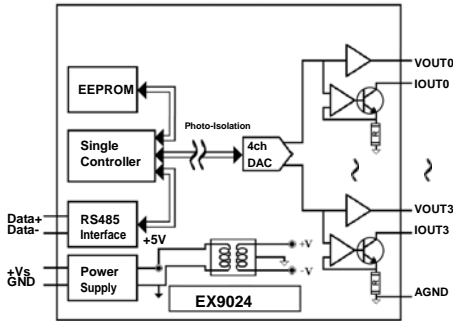
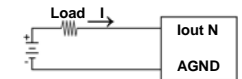
Power Consumption: 2W

Operating Temp: -25~75

Voltage D/A Wire Connection:

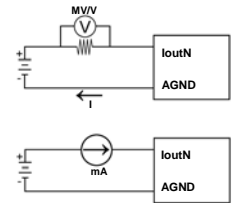


Current D/A Wire Connection:



Current D/A Calibration sequence:

1. Connect meter and external power sources to module's current output channel 0
2. Setting type to 30. (0 to 20mA)
3. Output 0mA.
4. Check the meter and trim the output until 0mA match by apply trim command
5. Perform 0mA Calibration Command.
6. Output 20mA
7. Check the meter and trim the output until 20mA match by apply trim command.
8. Perform 20mA Calibration Command.
9. Repeat 1 to 8 for channel 1,2 and 3.



### EX9033D



Resolution: 16bit

**Analog I/P channel: 3 diff**

Sampling rate: 15Hz

Sensor I/P: RTD(Pt, Ni)

4.5 digit LED

Isolation: 3000V

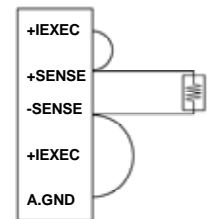
Dual Watchdog Timer

Power I/P: +10V to +30V

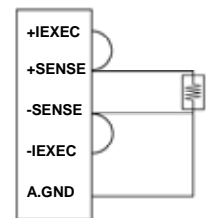
Power Consumption: 2.5W

Operating Temp: -25~75

2-wire RTD connection



3-wire RTD connection



4-wire RTD connection

