

# P1215

12.1" Slim-size Intel Low Voltage PIII/Celeron Panel PC

Panel  
Computing

# 6



## Features

- Intel Low Voltage Celeron CPU
- 12.1" Resistive Touch screen
- Optional AC or DC power input
- Vibration Resistant
- Compact Flash for Embedded O.S
- Mini PCI for wireless
- VESA ARM and Bezel mounting support

## System

<b>CPU</b>	Intel Low Voltage Celeron 400~733MHz CPU FSB100/133MHz
<b>Cache</b>	2nd Level 256Byte
<b>Memory</b>	256M SDRAM (up to 512MB SDRAM)
<b>VRAM</b>	SMI722 G8 Lynx 3D+ engine 8MB Video RAM on chip
<b>Chipset</b>	Intel 815E + Intel CH2
<b>ATA / IDE</b>	Ultra DMA 33, support 2 IDE drives
<b>Watchdog Timer</b>	127-level Reset
<b>LAN</b>	Intel 82562ET 10/100base-T , Autoswitching
<b>System Fan</b>	1 x 4cm x 4cm / 8 CFM

## I/O

<b>Serial Port</b>	3 x RS-232 ports (COM1/2/3)
<b>Parallel Port</b>	1 x SPP/EPP/ECP mode (optional)
<b>USB Port</b>	2 x USB 1.1 compliant
<b>KB / MS</b>	1 x PS2 K/B and Mouse
<b>LAN</b>	RJ-45

## LCD Display

<b>Size / Type</b>	12.1" TFT Color LCD
<b>Max. Resolution</b>	800 x 600, SVGA
<b>Pixel Pitch</b>	0.3075mm x 0.3075mm
<b>Touch Screen</b>	12" Resistive (COM4)
<b>Max. Colors</b>	262K
<b>Viewing Angle</b>	160°(V), 160°(H)
<b>Luminance (cd/m<sup>2</sup>)</b>	300
<b>Back Light MTBF</b>	50,000 hours

## Storage

<b>HDD / Type</b>	1 x built-in 2.5" vibration Resistant HDD bay
<b>Flash Disk</b>	1 x Type II Compact Flash Disk Socket (Internal)

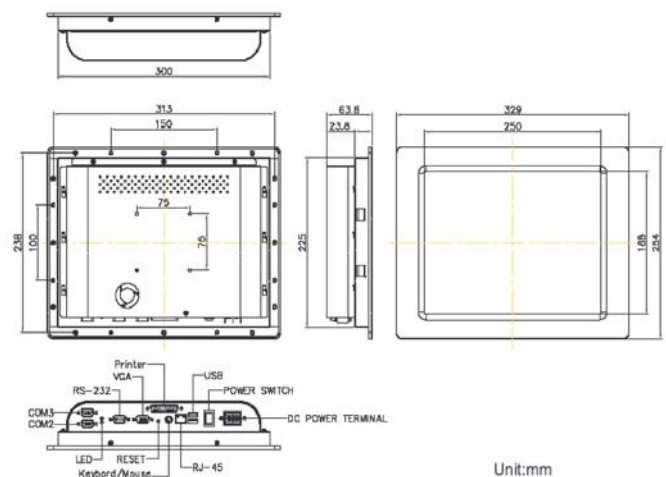
## Power Supply

<b>Output rating</b>	150W
<b>Input vltage</b>	DC 18~32V or AC 90~260V (optional)

## Mechanical & Environmental

<b>Operating Temp.</b>	0 ~ 50°C
<b>Storage Humidity</b>	5 ~ 95% (non-condensing)
<b>Vibration</b>	17 ~ 500 Hz, 1G PTP
<b>Shock</b>	10G/peak (11mm sec)
<b>Construction</b>	Heavy-duty Steel + Aluminum (Front bezel)
<b>Weight</b>	3.5kg (7.7 lb)
<b>Dimension(WxHxD)</b>	329 x 254 x 63.8mm
<b>Mounting</b>	VESA-75/100 compatible

## Dimensions



## Ordering Information

<b>P1215-6600/C733</b>	Panel PC with 12" TFT SVGA LCD with Intel Low Voltage Celeron 733GHz CPU FSB133MHz with Resistive Touch screen
<b>P1215-6100/C733</b>	Panel PC with 12" TFT SVGA LCD with Intel Low Voltage Celeron 733MHz CPU FSB133MHz with Tempered Glass
<b>AC power kits</b>	AC 90~260V input for P1215 power kit
<b>ARM-160</b>	LCD monitor versatile Arm(VESA)
<b>ARM-174</b>	LCD monitor Wallmount bracket(VESA)